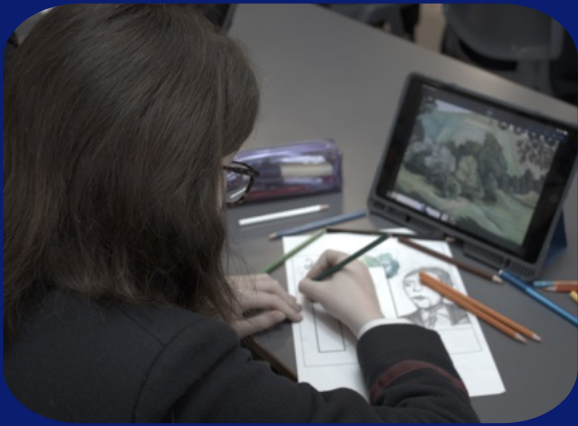


**THE WALLACE HIGH SCHOOL
OPEN MORNING 2024
STUDENT GUIDE**



WHAT'S GOING ON?

Our Open Morning is all about letting you get a feel for what is on offer at Wallace. We are pretty sure there is something for everyone - whether that is one of the great activities in our departments or the extracurricular fair. Make sure you take a good look round, ask our students and teachers plenty of questions and have a great time!



OUR YEAR 8 SUBJECTS

All year 8 students study a wide range of subjects including:

Computing

Mathematics

History

Physics

Art and Design

Geography

Games

Biology

French

Home Economics

Music

Chemistry

Physical Education

Philosophy

Technology and Design

English

Drama



BEYOND THE CLASSROOM

Whilst classroom activities can be fun, we also have lots to do outside of the normal timetable. Whether you are into music, sport, science, technology, drama - whatever it might be - we are sure you can find a club or society that you will enjoy. Getting involved in something gives you a great opportunity to make new friends and learn new skills!



COULD WE INTEREST YOU IN...



Chess Club
Junior Film Club
Song Writing Club
Debating Club
Junior Languages Club
Technology Club

Art Club
Eco Club
Junior Scripture Union
Cantabile (Choir)
Junior Book Club
Minecraft Club



SPORT? WE HAVE IT COVERED!

Wallace has a vast array of sporting opportunities. We also have great on site facilities - so sport is accessible to all our students. Make sure you check out our fitness suite during Open Day

The main sports students can play or get involved in at Wallace include:

Hockey, Netball, Rugby, Tennis, Cricket and Athletics.

We also have students involved in school teams for cross country, badminton, gymnastics, golf, swimming and show jumping to name just a few!!



We have a long been a proving ground for representative players, for Ulster and Ireland teams in many sports. We currently have senior internationals representing Ireland in hockey and rugby.

MUSIC MAKES US HAPPY!

The Music Department boasts many choirs, orchestral groups, a guitar club, a jazz group and a piano club. The choirs have toured all over the world, from the USA to Czechia. The orchestra perform locally on a regular basis in the Island Arts Centre, for the PSNI and at the Royal Victoria Hospital for Sick Children.

Lessons in a wide variety of instruments including brass, strings, woodwind, guitar, voice and piano are all available from expert tutors.

All Year 8 pupils perform at a musical evening during the Autumn Term.



THE FORM SYSTEM

As a Year 8 pupil you will be looked after by a Head of Year and an Assistant Head of Year who have overall responsibility for the welfare and progress of all the pupils in the year. Year 8 is arranged alphabetically into 6 classes. A Class Tutor will look after each class of 28 to 30 pupils. You will see your Class Tutor each morning for registration and he/she will give you advice and support to help you settle into Year 8.



SETTLING IN

We have a well established induction system here at Wallace. From when you receive an offer of a place until the end of your first full month in school, there are lots of activities to help you settle in.

The best of these is always our Year 8 Adventure Day - we are certain that this will be a highlight of your time at Wallace!

THE HOUSE SYSTEM

Every pupil is a member of a School House – there are three Girls' Houses and three Boys' Houses, each with pupils from Year 8 to Year 14. Mr Simpson is in charge of Boys' Houses and Miss Frey of Girls' Houses.

The Houses compete against each other in a whole range of competitions, both sporting and non-sporting, arranged throughout the year - a highlight being the hugely competitive House Quiz. At the end of the year the points awarded are added up and House Cups are presented to the winning Girls' and Boys' Houses.

**BOYS:
CONWAY
GIRLS:
GRACEY**

**BOYS:
BARBOUR
GIRLS:
HANNA**

**BOYS:
HAMILTON
GIRLS:
SEYMOUR**

Can you find out why our houses have these names?



WHY WALLACE?



The Wallace High School is named after Sir Richard Wallace. He was a land owner in Lisburn in the 1800s. He donated a lot of money to different ventures in the town and many key parts of Lisburn are named after him; Wallace Park, Wallace Avenue and of course, The Wallace High School. The school was originally known as Lisburn Intermediate and University School and only became The Wallace High School in the 1940s to honour Sir Richard.

Sir Richard was well known for his philanthropy and his spirit lives on in school today as we raise large amounts of money for a wide range of charities each year via a number of events and activities. Our school motto, Esperance, is taken from the Wallace family crest. Esperance means “hope” and we “hope” you will enjoy our Open Day!